

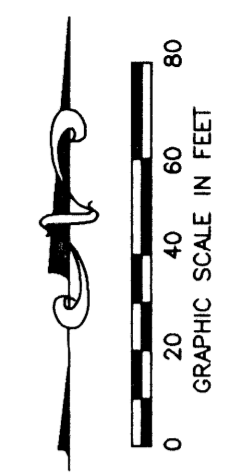
JOURNEY'S END PLAT TWO

PART OF SMITH DAIRY EAST P.U.D.
 BEING A PORTION OF SECTION 3, TOWNSHIP 45 SOUTH, RANGE 42 EAST
 TOGETHER WITH A REPLAT OF A PORTION OF BLOCK 39,
 PALM BEACH FARMS COMPANY, PLAT NO. 3,
 PLAT BOOK 2, PAGES 45 THROUGH 54
 SITUATE IN SECTION 3, TOWNSHIP 45 SOUTH, RANGE 42 EAST
 PALM BEACH COUNTY, FLORIDA
 FEBRUARY, 1999 SHEET 12 OF 12

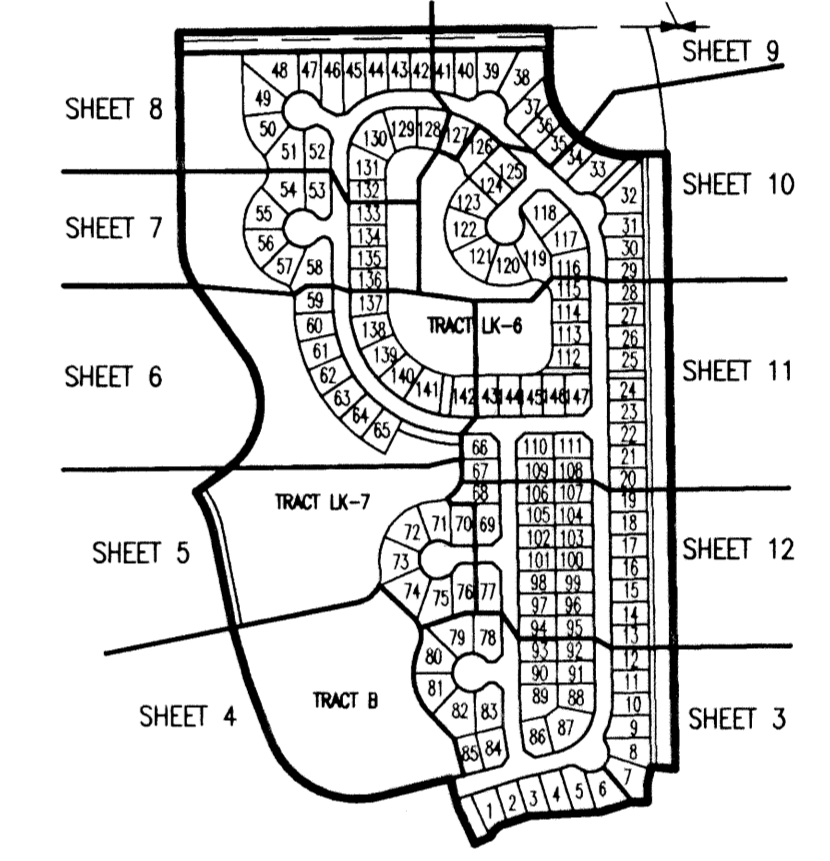
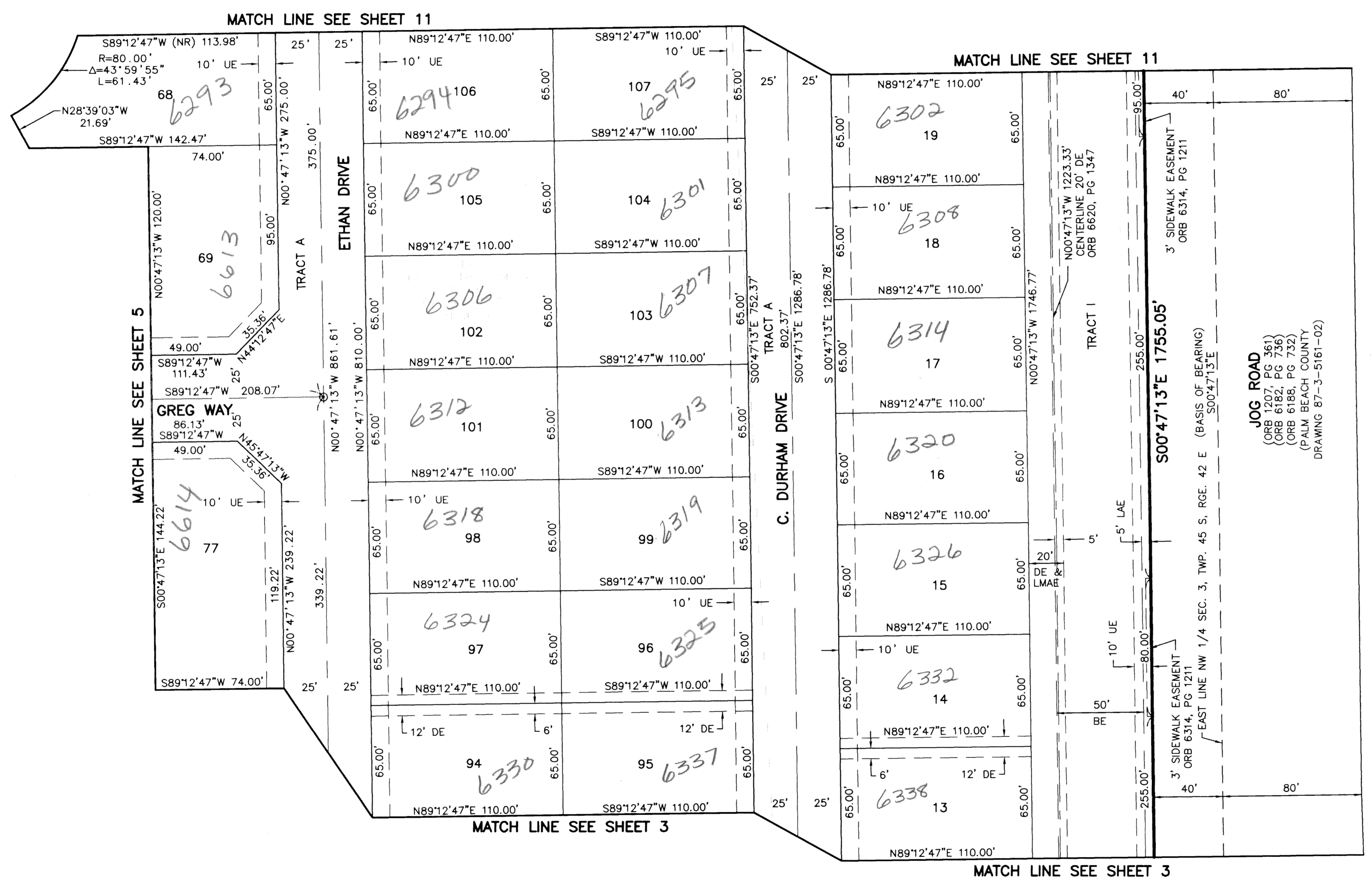
0677-006



STATE OF FLORIDA
 COUNTY OF PALM BEACH
 THIS PLAT WAS FILED FOR
 RECORD _____ DAY OF _____
 THIS _____ AD, 1999 AND DULY RECORDED
 IN PLAT BOOK _____ ON PAGES
 _____ AND _____
 DOROTHY H. WILKEN, CLERK
 BY: _____, D.C.



CIRCUIT COURT SEAL



SHEET LOCATION MAP
 (NOT TO SCALE)

LEGEND

- L ARC LENGTH
- AE ACCESS EASEMENT
- BE BUFFER EASEMENT
- Δ CENTRAL (DELTA) ANGLE
- CH CHORD
- DE DRAINAGE EASEMENT
- LAE LIMITED ACCESS EASEMENT
- LME LAKE MAINTENANCE EASEMENT
- LMAE LAKE MAINTENANCE ACCESS EASEMENT
- PUD PLANNED UNIT OF DEVELOPMENT
- (NR) NON-RADIAL
- ORB OFFICIAL RECORD BOOK
- PB PLAT BOOK
- PG(S) PAGE(S)
- R RADIUS
- (TYP) TYPICAL
- UE UTILITY EASEMENT
- PERMANENT REFERENCE MONUMENT
- SET LB-048 PERMANENT CONTROL POINT
- SET LB-048 SET LB-048
- ⊕ CENTERLINE

WINSTON TRAILS
 P.U.D.

JOG ROAD
 (ORB 1207, PG 361)
 (ORB 6182, PG 736)
 (ORB 6188, PG 732)
 (PALM BEACH COUNTY
 DRAWING 87-3-5161-02)

SUBDIVISION Journey's End Plat 2
 ROOM 605
 FLOOR ZONE 6
 QUAD# 34
 SE 86-1061
 TAZ 945
 PUD NAME Smith Dairy East
 FLOOD MAP# 176A
 ZONING PUD/SE
 ZIP CODE 33463

K:\west\westsm_a\p11.dwg 06/07/99 10:38:57 AM EDT

REV.: 3-26-99
 CAD FILE:
 WESTSM_A/SM_ARP11

THIS INSTRUMENT WAS PREPARED BY DAVID L. SMITH, P.S.M., IN THE OFFICES OF MOCK, ROOS & ASSOCIATES, INC., 5720 CORPORATE WAY, WEST PALM BEACH, FLORIDA 33407.

SCALE:
 1" = 40'
 P.A. NO.:
 99082.53
 DATE:
 FEBRUARY 1999
 DRAWING NO.:
 45-42-03-68

MOCK • ROOS
 ENGINEERS • SURVEYORS • PLANNERS
 5720 Corporate Way, West Palm Beach, Florida 33407
 (561) 683-3113, fax 478-7248

JOURNEY'S END PLAT TWO
 PART OF SMITH DAIRY EAST P.U.D. BEING A PORTION OF SECTION 3, TOWNSHIP 45 SOUTH, RANGE 42 EAST, TOGETHER WITH A REPLAT OF A PORTION OF BLOCK 39, PALM BEACH FARMS COMPANY, PLAT NO. 3, PLAT BOOK 2, PAGES 45 THROUGH 54 SECTION 3, TOWNSHIP 45 SOUTH, RANGE 42 EAST PALM BEACH COUNTY, FLORIDA